



CENTER FOR SOUTHEAST ASIAN STUDIES, KYOTO UNIVERSITY

The Center for Southeast Asian Studies (CSEAS), Kyoto University was founded in 1963. Since then, from various perspectives, it has focused on the dynamic differences and diversity that exist within the region. As a research Center of Excellence, it embraces a multidisciplinary approach to area studies by including a synergy of not only the humanities and social sciences, but also the natural sciences such as agronomy, ecology, medicine, and engineering. Through a combination of disciplinary approaches, CSEAS offers an exciting arena for interdisciplinary joint research programs. This unique characteristic allows CSEAS to stand out from other area studies institutions and facilities around the world by placing great emphasis on conducting comparative and comprehensive studies necessary to build a more complete picture of the region and of the world.

#### Institution Partners

The following institutions are participating in this program: Graduate School of Asian and African Area Studies (ASAFAS), Center for Integrated Area Studies (CIAS), Center for African Area Studies (CAAS), Research Institute for Sustainable Humanosphere (RISH), Graduate School of Global Environmental Studies, and Graduate School of Agriculture.

# SOUTHEAST ASIAN STUDIES FOR SUSTAINABLE HUMANOSPHERE

Large-Scale Research Program "Promoting the Study of Sustainable Humanosphere in Southeast Asia"  
funded by the Japanese Ministry of Education, Culture, Sports, Science and Technology (MEXT), 2011-2016



CENTER FOR SOUTHEAST ASIAN STUDIES, KYOTO UNIVERSITY (CSEAS)

46 Shimoadachi-cho, Yoshida Sakyo-ku, Kyoto 606-8501, Japan  
Website: <http://sea-sh.cseas.kyoto-u.ac.jp/en/>  
e-mail : [sea-sh-office@cseas.kyoto-u.ac.jp](mailto:sea-sh-office@cseas.kyoto-u.ac.jp)

<http://sea-sh.cseas.kyoto-u.ac.jp/en>

# Overview

To deal with the future needs of the region the program looks at interactions between the environment, technology, and institutions. It encompasses a vision of the “*humanosphere*,” one that engages with ever-present challenges to human security in the region. The *humanosphere* is composed of the *geosphere*, *biosphere*, and *human society*. This program brings together researchers from the social sciences, humanities, and natural sciences to conduct interdisciplinary research that can offer new models of social development for human societies of the region and in particular, of the world in general.

# Objectives

The program has two main objectives. The first is to lay the foundations for community-building in the region that does not exclusively depend on economic-orientated development models. The program proposes alternative and agenda-setting models of development from the perspective of the sustainability of the *humanosphere*. In particular, it aims to place emphasis on including the global, regional and local environment into research agendas to re-conceptualize development paths in East Asia. The second is to foster the academic community at both regional and global levels, with emphasis on training young researchers and promoting collaboration among Southeast Asian, Japanese, Korean, and Chinese researchers while linking the East Asian academic network to the world. Through these two objectives the program will promote common research themes that deal with shared concerns within East Asia mainly, social risk, environmental degradation, epidemics, natural disasters, ageing societies and energy procurement and management.

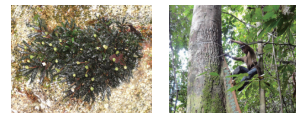
# Global research leadership in East Asia

To achieve the above, this program offers innovative and concrete research approaches that tackle the pressing concerns of human security in the region. To investigate and develop a sustainable *humanosphere*, the program conducts research on plural co-existence with a focus on social capital, the strengthening of social infrastructures, and transnational regional restructuring. Concurrently, the program also examines how Southeast Asia’s tropical biomass societies are being reshaped through economic change as well as state and market orientated demands for resources. By taking the global capitalization of tropical biomass as a key point of investigation, researchers are examining the linkages between tropical biomass society and global interests and the potential impact environmental changes will have on the *humanosphere*.

## Plural Co-existence Research



## Biomass Research



# Nurturing future education through academic community building

To highlight research results, this program is fostering cooperation among academic communities in Southeast Asia and East Asia and strengthening Japan’s role in it. It will hold seminars, workshops and international conferences on sustainable *humanosphere* in the region; promote graduate-level education; train post-doctoral researchers and encourage collaboration among young and up-and-coming scholars; share world class research results through publications; and establish a consortium of area studies institutions to support interdisciplinary research and academic collaboration in the region and the world.



Southeast Asian Seminar in Philippine 2012



International Workshop 2013



Visual Documentary Project

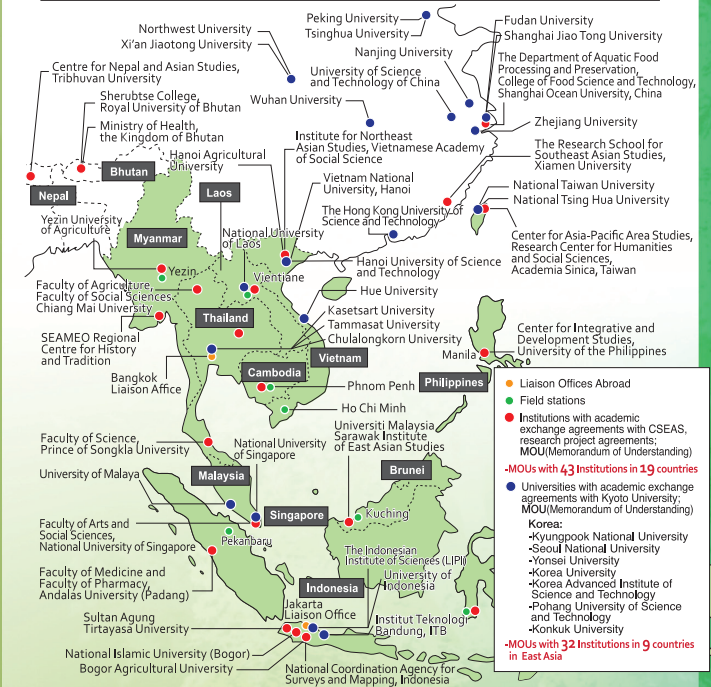


Southeast Asian Studies



CSEAS Monographs

# Strengthening International Collaborations in East Asia



# Sustainable Humanosphere for a shared common future

Ultimately, the program hopes to develop social development models attuned to the plural needs of East Asia; to offer directions to establish sustainable use of the environment and its energy sources; to push for future energy efficient models of social development; and most importantly, push for innovation, promotion, and expansion of technological, social, and political institutions which will flexibly deal with the region’s future needs.



# Conceptual framework of Sustainable Humanosphere Studies

(Years are not to scale)

