

Myanmar: Cyclone Nargis on 2-3 May, 2008



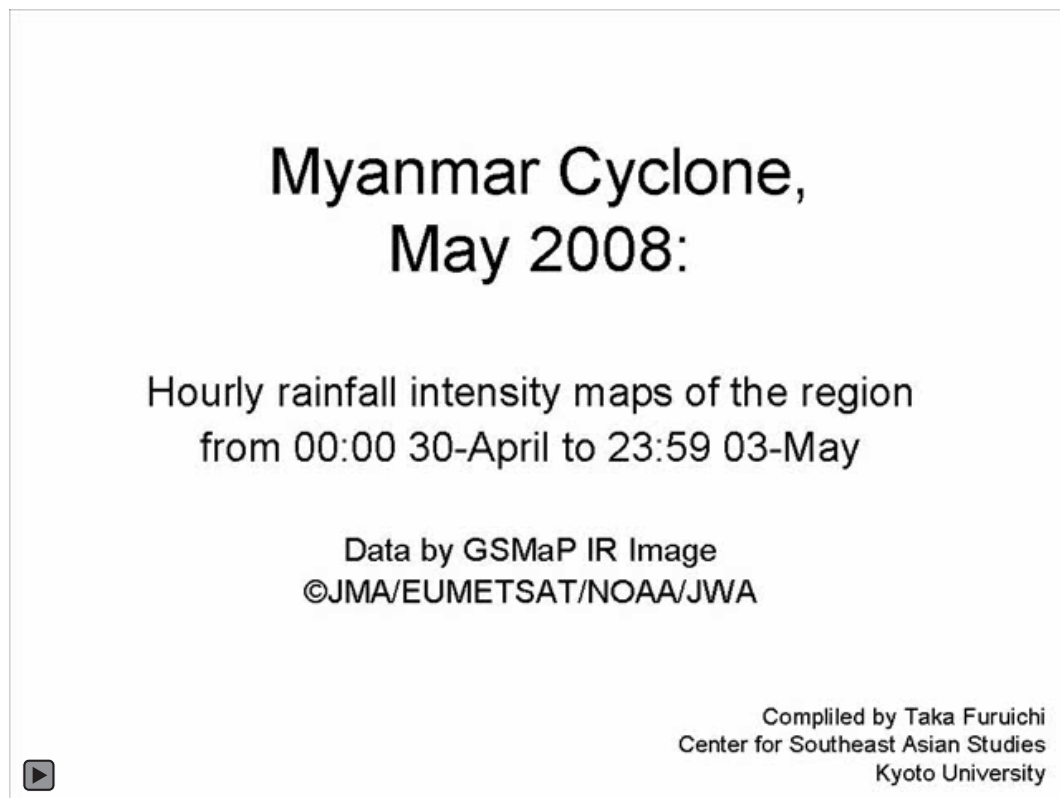
Center for Southeast Asian Studies,
Kyoto University

1. Physical Dimensions of the Cyclone and Damaged Area

1.1 Route of the Cyclone (Movie File)

Source: Center for Southeast Asian Studies, Kyoto University

The movie shows change of hourly rainfall intensity in the region of Bay of Bengal and mainland Southeast Asia from 30 April to 04 May. The route and evolution of the cyclone can be traced and followed.



1.2 Maps and Images of the Cyclone

(NASA Earth Observatory Web Page)

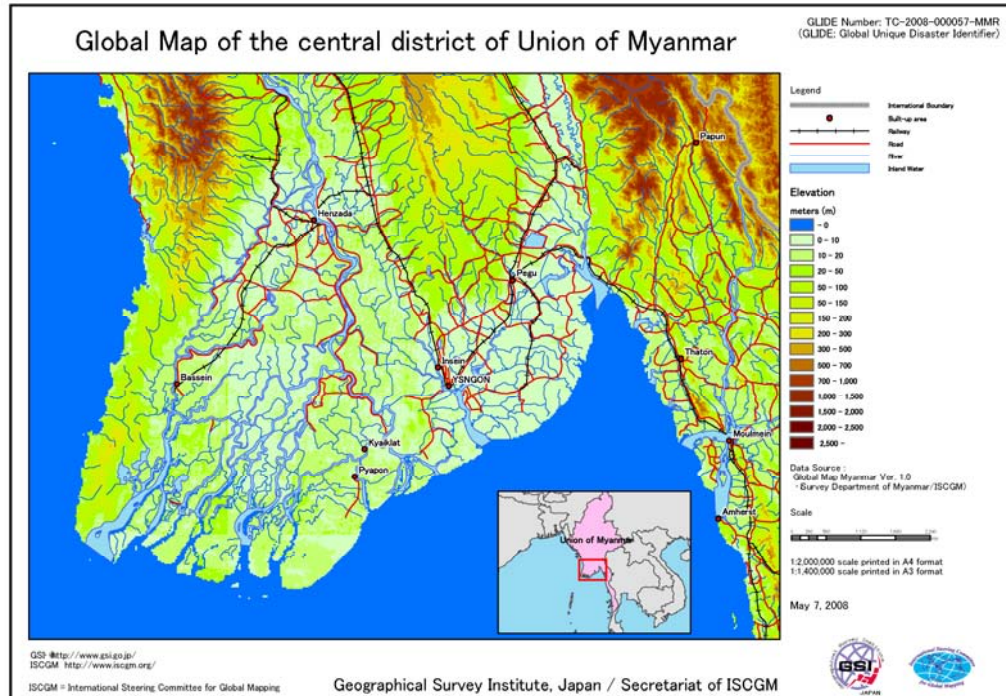
Various maps and images are available in the webpage, showing the physical dimensions of the cyclone.

1.3 Topographic Map of Southwest Myanmar (Image File)

Source: Geographical Survey Institute, Japan

Download from: ReliefWeb Homepage

The map shows topography of the Ayeyarwady (Irrawady) Delta and the Sittoung (Sittang) Delta, where severely damaged by the cyclone.

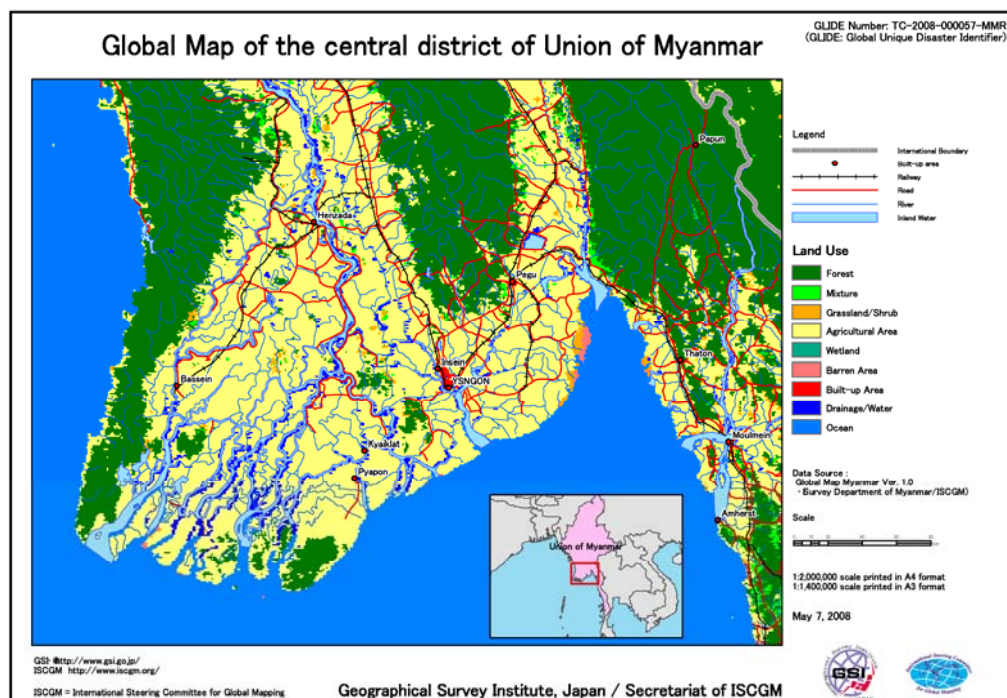


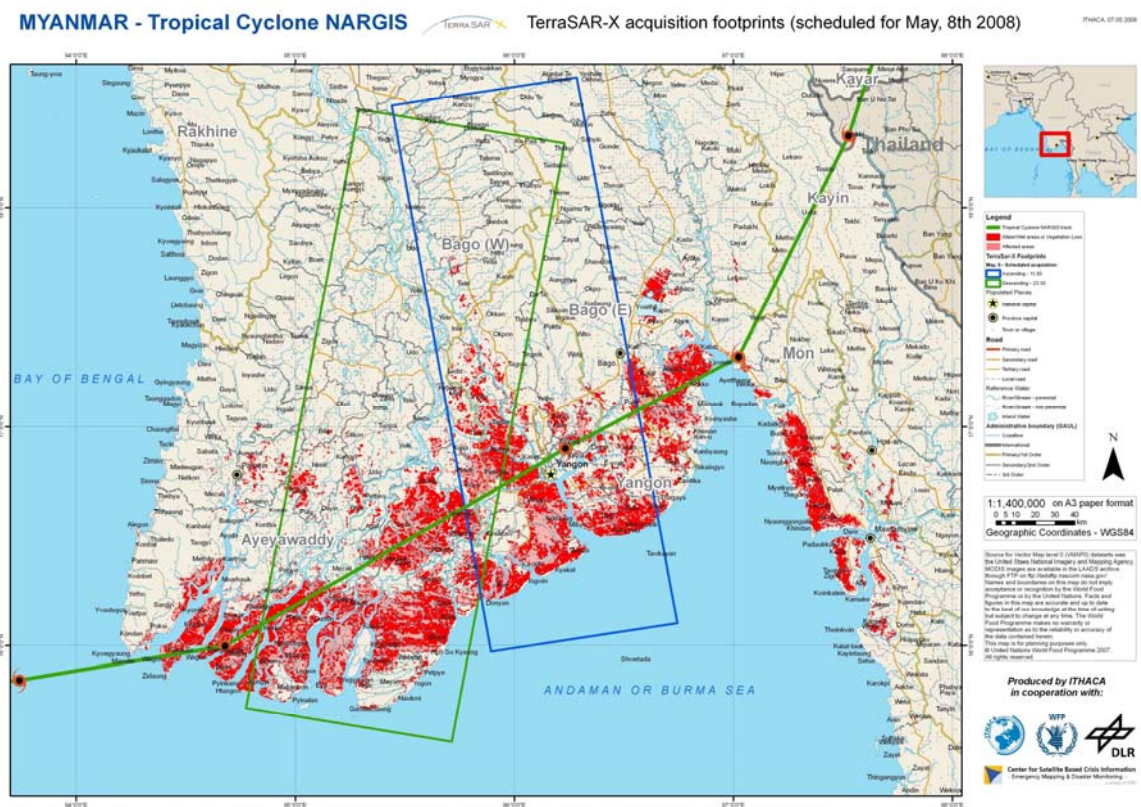
1.4 Land-use Map of Southwest Myanmar (Image File)

Source: Geographical Survey Institute, Japan

Download from: ReliefWeb Homepage

The map shows land-use of the Ayeyarwady (Irrawady) Delta and the Sittoung (Sittang) Delta, where severely damaged by the cyclone.





3. Relief for the Disaster

- 3.1 Emergency Relief by Japanese Government through Japan International Cooperation Agency (JICA Web Page)
- 3.2 Japanese Red Cross Society (Web Page)
- 3.3 ReliefWeb Web Page (Information needs of the humanitarian relief community)
- 3.4 UNDP Web Page

4. Related Links

- 4.1 Embassy of Myanmar in Tokyo (Web Page)